

# BEARINGS



SCHAEFFLER



## TIMKEN

BALL BEARINGS • ROLLER BEARINGS  
SEALS AND HOUSED UNIT BEARINGS



# POWER TRANSMISSION



BELT DRIVES • BRAKES • BUSHINGS • CLUTCHES  
CLUTCH COMPONENTS • POLY CHAIN • SHEAVES • TENSIONERS  
CHAIN DRIVES • CHAIN IDLERS • ROLLER CHAIN • SPROCKETS  
SHAFT COUPLINGS & GUARDS



# GEARING

**DODGE**<sup>®</sup>

**FALK**<sup>®</sup>

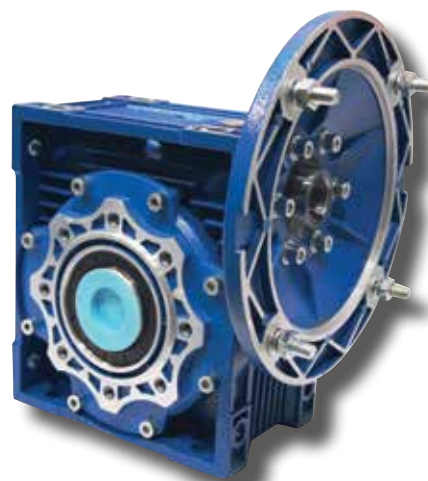
*Martin*

**NORD**  
DRIVESYSTEMS

**REGAL**

**SEW**  
**EURODRIVE**

ENCLOSED GEAR DRIVES • OPEN GEARING AND MILL PRODUCTS



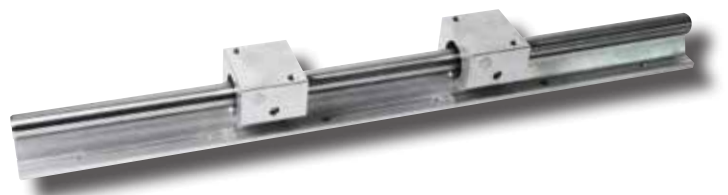
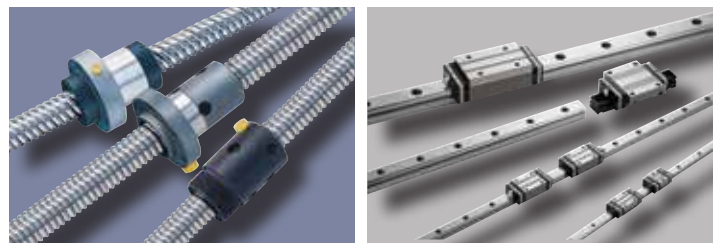
# LUBRICATION/ADHESIVES

GREASES  
LUBRICATION EQUIPMENT  
OILS • SEALANTS



# LINEAR MOTION

ROUND SHAFTING  
PROFILE RAIL • ACTUATORS  
BALL SCREWS • SPINDLES



# BULK MATERIAL HANDLING



CONVEYOR BELTS • SCREW CONVEYORS • BELT CLEANERS  
TROUGHING IDLERS • RETURN IDLERS • CONVEYOR PULLEYS  
IMPACT BEDS • SKIRT BOARDS • EMERGENCY ROPE PULLS • SIGNALING



**Purvis Industries  
Corporate Offices**

10500 N. Stemmons Freeway  
Dallas, TX 75220

214-358-5500

[purvisindustries.com](http://purvisindustries.com)

## OUR MISSION STATEMENT

We keep industry running and employees working to enrich our communities by providing superior technical products, solutions, and services.